

HOLY
NAME
OF
JESUS



A PRELIMINARY CASE STATEMENT

Holy Name of Jesus

Catholic Church & School | Wayzata, Minnesota

A PARISH CALLED TO RENEW AND BUILD FOR THE FUTURE

Holy Name of Jesus Catholic Church & School is a faith-filled community committed to worship, formation, and service. We gather to encounter Jesus Christ in the Eucharist, to form disciples across generations, and to strengthen family life through prayer, sacraments, and Catholic education.

In recent months, parish and school leaders have been working through a careful process of assessment, planning, and discernment. The goal: to name what we value most about Holy Name of Jesus today, and to understand what we must improve so our parish and school can thrive for the next generation.

This preliminary case statement is a snapshot of the needs and opportunities currently being discussed. It is intentionally early-stage – meant to inform, invite feedback, and help our community shape the best path forward.

OUR MISSION

"Sharing in the Body of Christ, we seek to know the heart of Christ, see the face of Christ, and be the hands of Christ."

2,500+

Households

475

Students

160+

Years of Faith

40

Acre Campus

Bearing Witness for Future Generations

PRIORITY PROJECTS

The feasibility study will help determine the most appropriate overall scope and fundraising goal. The priorities below represent an early framework for discussion – not final plans. They are intended to help us listen well, clarify what resonates, and make prudent decisions.

SANCTUARY RENOVATION

Estimated: \$3.1M



Refining architectural elements so the eye is drawn toward the crucifix, tabernacle, and altar. Early concepts include updated lighting, ceiling, and improved natural light as stained-glass windows and texts are relocated; baptismal font enhancements; more accessible Stations of the Cross; accessible confessionals; and a relocated sacristy.

BELL TOWER & ADORATION CHAPEL ADDITION

Estimated: \$2.7M

A new bell tower, above the sanctuary and a larger adoration chapel. The chapel includes a secure entrance to accommodate nighttime and perpetual adoration hours, private restrooms, and improved comfort and quiet. A \$750K liturgical art allowance spans both the chapel and sanctuary to ensure the space reflects the sacred character of our parish.



GOOD SAMARITAN CENTER & HOSPITALITY ENHANCEMENTS

Estimated: \$3.0M



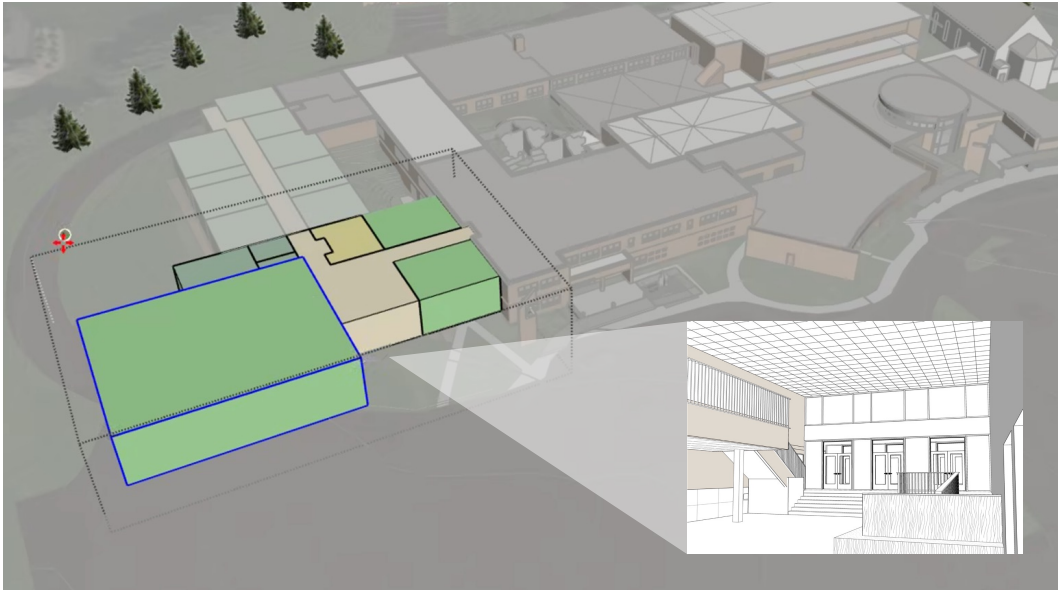
As our primary fellowship space, a reimagined Good Samaritan Center will deepen our commitment to the Benedictine tradition of hospitality. This enhanced space will improve presentations, social gatherings, funeral gatherings, and community events. Enhancements include improved acoustics, audio-visual, lighting, and modern finishes. The space also expands as the old gym becomes the school cafeteria. Our updated narthex will feature a more welcoming reception area and front desk, designed to improve visibility for visitors. A new sound-buffering vestibule will also help prevent noise from gathering areas entering the worship space.

Bearing Witness for Future Generations

PRIORITY PROJECTS

SCHOOL EXPANSION & ENTRY UPGRADE

Estimated: \$7.7M

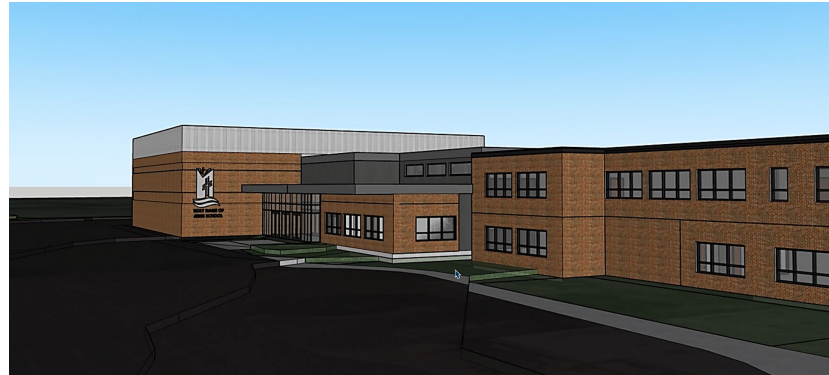


To accommodate a vibrant and growing school, the addition of a more welcoming and secure interior entry. Expansion includes three new classrooms, a new school office, teacher's lounge, bathrooms, and team rooms to address enrollment at capacity. New classroom space is contingent on the gymnasium and storm shelter meeting modern building codes.

GYMNASIUM & STORM SHELTER

Estimated: \$4.8M

A new 7,035 sq. ft. gymnasium designed as a designated storm shelter meeting modern safety codes. The current gym cannot host a standard basketball game, and its central location creates noise that disrupts the Good Samaritan Center and meeting rooms. Relocating the gym converts the old space into a school cafeteria – freeing the social hall so events like funeral luncheons proceed without interruption.



INTEGRATED INFRASTRUCTURE & BUILDING SYSTEMS

Estimated: \$1.3M



Integrated and upgraded electrical systems and boiler replacement. Conversion from the current pneumatic heating system to modern automated heating and cooling controls. Adding fire sprinkler systems to the Good Samaritan Center and gymnasium for improved safety. The school currently lacks a sprinkler system, and boilers have exceeded their service life – foundational investments that affect every other project on this list.

Your Role

Your prayers, perspective, and participation are essential as Holy Name of Jesus discerns the best path forward. This process is meant to be transparent and consultative – to invite input early enough that your feedback can genuinely shape the outcome.



To prepare well, parish leadership is partnering with CCS Fundraising to conduct a feasibility study – designed to listen to parishioners and school families, understand philanthropic capacity, and calibrate scope and goal so the plan is prudent, achievable, and unifying.

FEASIBILITY STUDY PROCESS

- **Interviews** A representative group of parish and school households will be invited to participate in confidential one-on-one conversations.
- **E-Survey** A survey will be shared with the wider community to gather additional input and ensure broad participation.
- **Assessment** Evaluation of support, priorities, and philanthropic capacity to understand what our community can achieve together.
- **Report** A final report will summarize what we heard and recommend a path forward, including scope, phasing, and readiness.

This process is designed to help us proceed with clarity and unity, avoiding premature decisions while providing enough information for meaningful feedback.

BROADER EFFORTS Holy Name of Jesus is participating in the Archdiocese's Lord, Renew Your Church campaign, joining parishes across the diocese to support vital ministries and the renewal of our faith community.



Thank You

for sharing your time and thoughts as part of this planning process